

H O M E

PARK CITY

REAL ESTATE & MOUNTAIN LIFESTYLES | SPRING SEASON '17

Soak in the Heat
Get Organized

SUN-DRENCHED
Homes

The Park Record.

Editor's Note



Welcome to the spring edition of the recently revamped Park City HOME magazine. We know most of you are still making turns on the mountain, but our spring issue stretches into that month or so when trails are a little too wet to bike or hike, and the resort has closed for the season. You know: That season where you're itching for warm weather activities.

So, we thought we'd provide you with some spring inspiration, with which you can brighten your home. As flowers begin to bloom, we recall what an important, happy role color plays in our lives, as Kelly Wallman explains the language of color in her story. We've also selected several light and bright items to inspire creativity regarding accessorizing your home.

And, speaking of items, our story on getting organized by Steve Phillips leads you to commit to non-cluttered spaces, while Rachael Hodson helps you find the perfect hot tub to soak in after a day's work — or play. With play comes plenty of gear and tracked mud and moisture, so Kim Fuller talks about how to design an efficient and elegant mudroom.

As Park City HOME evolves (for instance, we're incorporating profiles of local experts), we invite your comments and story ideas.

So, cozy up by a fireplace if it's a cold "spring" day, or sit in the sun and soak up some rays while you relax and enjoy Park City HOME.

— Kimberly Nicoletti

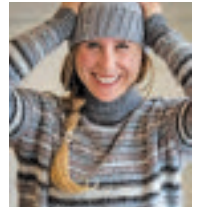


KIMBERLY NICOLETTI revolves her life around skiing and the mountain lifestyle. As a freelance writer, she has been published in national magazines, metropolitan newspapers and regional publications. After building her own home with her husband and parents (no contractors — they all had building experience) and working as the managing editor of a mountain home magazine, she has a much better idea of what she'll do when planning her next mountain house on a lot she's been "sitting on" in Powder Mountain, Utah.
kim@kimberlynicoletti.com

Contributors

RACHAEL HODSON

is a journalist and photographer who lives at the bottom of Little Cottonwood Canyon, Utah with three crazy boys, one whom she happens to be married to. She spends most of her time searching for powder at Alta or searching for perfect shots all across the West (through her camera or the snowy kind that blow in her face). You can follow her on Instagram @rachaelhodsonphoto or @rachskis801 or at www.rachaelhodsonphoto.com.



GLENN MERLIN JOHNSON

has been a full-time Park City resident for the past 26 years. He has traveled the world to exclusive homes with renowned clientele. He is also an author and lecturer on the "Art and Science of Illumination." Glenn has six U.S. Patents for architectural and technical lighting products and applications. He is a proud father of five, with his beautiful and talented wife, Charlene. He is elated that his three sons, Christopher, Scott and Matthew, have joined him in his company, Adaptive Design Group, and are continuing the legacy of light coupled with today's complex technologies. Glenn's hobbies include golf, playing jazz and blues on guitar, snowboarding and hiking in these beautiful Rocky Mountains.

STEVE PHILLIPS

is a Park City-based writer, actor and hot air balloon pilot. As a long-time resident, he enjoys mountain biking, trail running, kayaking, skate skiing and the town's outstanding summer concert series.



KELLY WALLMAN

began her career in interior furnishings in San Francisco in 1977. Furniture design and construction were passions, pursued by becoming a buyer for a chain of contemporary stores in the Bay Area, where she also worked as lead designer in select Bay Area Parade of Homes. In 1981, Kelly and her husband left the Bay Area to open San Francisco Design in Salt Lake. In 1990, they opened the Park City location, continuing her passion for interiors.

STEVE FISHER

has a unique athletic background, from the sea to the mountains. Based in Lahaina, Maui, Hawaii, he once windsurfed solo from Los Angeles to Maui in 47 days, a Guinness Record. He is a member of the Explores Club New York, has competed in every Xterra World Championship Mountain Bike Triathlon, and is the founder of MauiSkiBus, a bright yellow sports RV often seen in the Park City area.



KIM FULLER

is a freelance writer, photojournalist and owner of Kim Fuller Ink., and the Life In Full lifestyle blog. Kim's writing focuses on wellness, recreation, art, food and travel. She loves running, biking, hiking, backpacking, skiing, snowshoeing — and she also enjoys keeping up with her interests in art, music and reading. When she's not diligently writing, find Kim strolling the farmers' markets or toasting with friends on a sunny patio — enjoying the more indulgent angles of inspiration.

All Systems Go

By Glenn Merlin Johnson



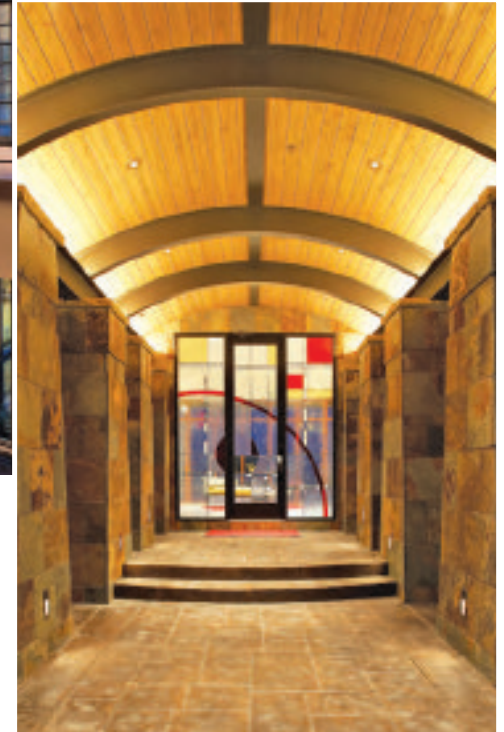
COURTESY OF ROGER WADE STUDIO, INC.
Stylish table lamps, hanging lights and uplighting all add to a stunning room.

Lighting, dimming and electronics in the home today demand a *Maestro* — a real orchestra leader for the design and build process. It is no longer enough to rely on architects and subcontractors to coordinate all of today's modern miracles in home technology; lighting designers and electronic systems experts provide specific knowledge in every aspect of home illumination. >>



Top: COURTESY OF GARDNER GROUP ARCHITECTS
Blending LEDs installed in the ceiling, as well as in modern fixtures, creates a stellar effect.

Right: COURTESY OF UPWALL DESIGN ARCHITECTS
In this wide hallway, ceiling lights and uplighting highlight the arched top, while downlighting illuminates the flooring.



>> Here's in-depth information on just one aspect of lighting and electronics: LEDs. Once you choose the best type of LED lighting for your home, experts can link it all into automated systems for seamless control of everything from dimming and music to temperature control and security.

LED Lighting

Believe it or not, LED lighting can be wonderful, with the proper specification and placement. After you make the initial investment and suitable selections, your lighting will remain timeless. After all, the demand for energy efficiency and long-life LED lamp technology has already become the norm.

You have a choice with LED technology in the home; the result will either be warm and inviting or cold and lifeless. Let your eyes be the judge.

Four Key Elements of Successful LED Lighting

1) CRI (Color-Rendering Index)

The Color-Rendering Index is a measurement of a light source's ability to show an object's color "naturally," or as perceived by the human eye.

In other words, those comforting classic tones of incandescent lamps we all know and love measure a CRI of 95. So, you should choose LED lamps with a CRI rating of at least 90.

2) Kelvin Temperature

Kelvin Temperature (color temperature) is a measurement of the frequency of light a bulb emits. On the color spectrum, a lower K value appears red, while a higher value appears blue, with several gradients in-between.

Incandescent lamps produce a Kelvin Temperature of 2700K. Your LED lamps should have a Kelvin Rating between 2700K and 3000K for optimum natural home lighting; modern homes reflect this Kelvin range.

3) Lumens

Efficacy (lumens per watt) is a measurement of the efficiency with which a bulb produces light. For example, a standard halogen 50-watt MR16 lamp produces 550 lumens (11 lumens per watt) whereas a good quality LED MR16 replacement lamp of 10 watts produces 500 lumens (50 lumens per watt). As you can see, LED lamps offer equal lumens with considerably less wattage consumption.

4) Lamp Life

LED lamps are 80 percent more efficient than incandescent ones. High quality LED lamps last >>

Glenn Merlin Johnson is president of Adaptive Design Group Inc., based in Park City. He has been providing his unique expertise nationally in the custom home world for 35 years.

Contact him at www.adaptivedg.com, glenn@adaptivedg.com or 435-602-5800, ext. 103.

>> up to 25,000 hours, whereas a typical incandescent lamp lasts up to 3,000 hours; that's almost 8.5 times the lifespan.

LED Dimming

Successful dimming of an LED system can be difficult because it requires three separate devices: the LED lamp or module, the electronic driver and the dimmer. These devices must match perfectly to eliminate strobe lighting effects and other unpredictable anomalies.

Adding LED to Electronic Systems Architecture

As mentioned earlier, lighting and dimming are just two parts of the 14 or so electronic subsystems in today's homes. Systems such as audio, video, shades, security, cameras, access control, fire suppression, heating, cooling, humidity, communications and water flow now have on-board intelligence, which, when engineered properly, can seamlessly be controlled and monitored.

But linking all of these systems in the last few years has been problematic at best, because each home requires unique, and secure, programming.

This is where the orchestra leader comes in to conduct, and sort out, all of the home's electronic systems. Once synchronized, you can choose any kind of ambient or task lighting at the touch of a button, while also integrating other electronic systems easily. Now that's a bright way to go. ■

ECHO TREE RANCH

WINTER AND SPRING SALE
SUMMIT COUNTY'S LARGEST TREE FARM
42 PLUS ACRES

Aspens, Fir, Maples, Pines, Spruces, Hard to find
big specimen trees & MORE

20 ft Colorado Spruce \$999
Trees from 6ft to over 40 ft tall

Best prices and service in Summit
County

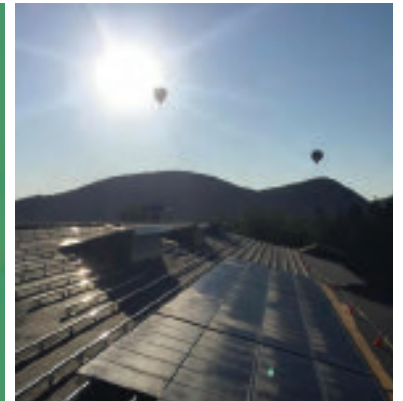
Visit online at:

www.echotreeranch.com

435-602-2783



**Park City's
solar pros
since 2010**



**SOLAR is STILL the
future of ENERGY...**
Call today for a free site visit
before the spring rush!



IT'S TIME TO GO SOLAR!

Contact Alpenglow Solar + Electric
today for an LED upgrade
or free solar site visit

WWW.ALPENGLAWSOLAR.COM

435-659-6083